

# MORE THAN ENOUGH



# My 2023 Promise

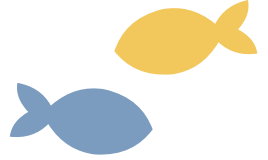
Acknowledging that there is always More Than Enough, I/we promise \$\_\_\_\_\_ for ministry.  
I/we plan to fulfill this pledge  weekly  monthly  semiannually  annually.

NAME \_\_\_\_\_

ADDRESS \_\_\_\_\_

PHONE \_\_\_\_\_ EMAIL \_\_\_\_\_

- Please contact me about setting up payments from my checking account/credit card.
- Please contact me about including the church in my estate plans.
- Please contact me about making my gift through stocks or securities.
- I will make my gift online this year, please look for my gift.



# MORE THAN ENOUGH



# My 2023 Promise

Acknowledging that there is always More Than Enough, I/we promise \$\_\_\_\_\_ for ministry.  
I/we plan to fulfill this pledge  weekly  monthly  semiannually  annually.

NAME \_\_\_\_\_

ADDRESS \_\_\_\_\_

PHONE \_\_\_\_\_ EMAIL \_\_\_\_\_

- Please contact me about setting up payments from my checking account/credit card.
- Please contact me about including the church in my estate plans.
- Please contact me about making my gift through stocks or securities.
- I will make my gift online this year, please look for my gift.



# MORE THAN ENOUGH



# My 2023 Promise

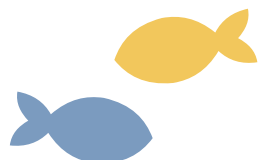
Acknowledging that there is always More Than Enough, I/we promise \$\_\_\_\_\_ for ministry.  
I/we plan to fulfill this pledge  weekly  monthly  semiannually  annually.

NAME \_\_\_\_\_

ADDRESS \_\_\_\_\_

PHONE \_\_\_\_\_ EMAIL \_\_\_\_\_

- Please contact me about setting up payments from my checking account/credit card.
- Please contact me about including the church in my estate plans.
- Please contact me about making my gift through stocks or securities.
- I will make my gift online this year, please look for my gift.



Annual Income	Weekly Income	Beyond the Tithe		Tithe	Proportional Giving								
		15%	12%		10%	9%	8%	7%	6%	5%	4%	3%	2%
\$20,000	\$385	\$58	\$46	\$38	\$35	\$31	\$27	\$23	\$19	\$15	\$12	\$8	\$4
\$25,000	\$481	\$72	\$58	\$48	\$43	\$38	\$34	\$29	\$24	\$19	\$14	\$10	\$5
\$30,000	\$577	\$87	\$69	\$58	\$52	\$46	\$40	\$35	\$29	\$23	\$17	\$12	\$6
\$40,000	\$769	\$115	\$92	\$77	\$69	\$62	\$54	\$46	\$38	\$31	\$23	\$15	\$8
\$50,000	\$962	\$144	\$115	\$96	\$87	\$77	\$67	\$58	\$48	\$38	\$29	\$19	\$10
\$60,000	\$1,154	\$173	\$138	\$115	\$104	\$92	\$81	\$69	\$58	\$46	\$35	\$23	\$12
\$70,000	\$1,346	\$202	\$162	\$135	\$121	\$108	\$94	\$81	\$67	\$54	\$40	\$27	\$13
\$80,000	\$1,538	\$231	\$185	\$154	\$138	\$123	\$108	\$92	\$77	\$62	\$46	\$31	\$15
\$90,000	\$1,731	\$260	\$208	\$173	\$156	\$138	\$121	\$104	\$87	\$69	\$52	\$35	\$17
\$100,000	\$1,923	\$288	\$231	\$192	\$173	\$154	\$135	\$115	\$96	\$77	\$58	\$38	\$19
\$120,000	\$2,308	\$346	\$277	\$231	\$208	\$185	\$162	\$138	\$115	\$92	\$69	\$46	\$23
\$150,000	\$2,885	\$433	\$346	\$288	\$260	\$231	\$202	\$173	\$144	\$115	\$87	\$58	\$29

Annual Income	Weekly Income	Beyond the Tithe		Tithe	Proportional Giving								
		15%	12%		10%	9%	8%	7%	6%	5%	4%	3%	2%
\$20,000	\$385	\$58	\$46	\$38	\$35	\$31	\$27	\$23	\$19	\$15	\$12	\$8	\$4
\$25,000	\$481	\$72	\$58	\$48	\$43	\$38	\$34	\$29	\$24	\$19	\$14	\$10	\$5
\$30,000	\$577	\$87	\$69	\$58	\$52	\$46	\$40	\$35	\$29	\$23	\$17	\$12	\$6
\$40,000	\$769	\$115	\$92	\$77	\$69	\$62	\$54	\$46	\$38	\$31	\$23	\$15	\$8
\$50,000	\$962	\$144	\$115	\$96	\$87	\$77	\$67	\$58	\$48	\$38	\$29	\$19	\$10
\$60,000	\$1,154	\$173	\$138	\$115	\$104	\$92	\$81	\$69	\$58	\$46	\$35	\$23	\$12
\$70,000	\$1,346	\$202	\$162	\$135	\$121	\$108	\$94	\$81	\$67	\$54	\$40	\$27	\$13
\$80,000	\$1,538	\$231	\$185	\$154	\$138	\$123	\$108	\$92	\$77	\$62	\$46	\$31	\$15
\$90,000	\$1,731	\$260	\$208	\$173	\$156	\$138	\$121	\$104	\$87	\$69	\$52	\$35	\$17
\$100,000	\$1,923	\$288	\$231	\$192	\$173	\$154	\$135	\$115	\$96	\$77	\$58	\$38	\$19
\$120,000	\$2,308	\$346	\$277	\$231	\$208	\$185	\$162	\$138	\$115	\$92	\$69	\$46	\$23
\$150,000	\$2,885	\$433	\$346	\$288	\$260	\$231	\$202	\$173	\$144	\$115	\$87	\$58	\$29

Annual Income	Weekly Income	Beyond the Tithe		Tithe	Proportional Giving								
		15%	12%		10%	9%	8%	7%	6%	5%	4%	3%	2%
\$20,000	\$385	\$58	\$46	\$38	\$35	\$31	\$27	\$23	\$19	\$15	\$12	\$8	\$4
\$25,000	\$481	\$72	\$58	\$48	\$43	\$38	\$34	\$29	\$24	\$19	\$14	\$10	\$5
\$30,000	\$577	\$87	\$69	\$58	\$52	\$46	\$40	\$35	\$29	\$23	\$17	\$12	\$6
\$40,000	\$769	\$115	\$92	\$77	\$69	\$62	\$54	\$46	\$38	\$31	\$23	\$15	\$8
\$50,000	\$962	\$144	\$115	\$96	\$87	\$77	\$67	\$58	\$48	\$38	\$29	\$19	\$10
\$60,000	\$1,154	\$173	\$138	\$115	\$104	\$92	\$81	\$69	\$58	\$46	\$35	\$23	\$12
\$70,000	\$1,346	\$202	\$162	\$135	\$121	\$108	\$94	\$81	\$67	\$54	\$40	\$27	\$13
\$80,000	\$1,538	\$231	\$185	\$154	\$138	\$123	\$108	\$92	\$77	\$62	\$46	\$31	\$15
\$90,000	\$1,731	\$260	\$208	\$173	\$156	\$138	\$121	\$104	\$87	\$69	\$52	\$35	\$17
\$100,000	\$1,923	\$288	\$231	\$192	\$173	\$154	\$135	\$115	\$96	\$77	\$58	\$38	\$19
\$120,000	\$2,308	\$346	\$277	\$231	\$208	\$185	\$162	\$138	\$115	\$92	\$69	\$46	\$23
\$150,000	\$2,885	\$433	\$346	\$288	\$260	\$231	\$202	\$173	\$144	\$115	\$87	\$58	\$29